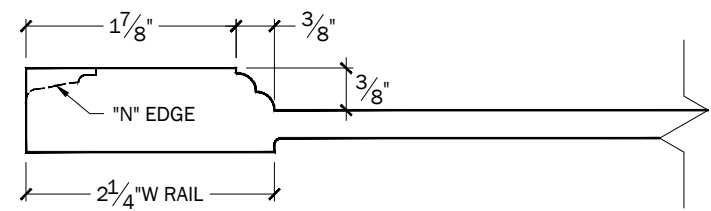


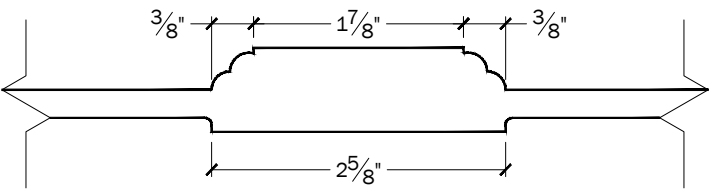


Shown: Ashbury - MDF - Portobello Fudge

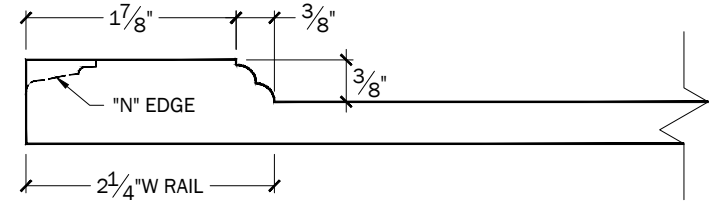
Prime Door Profile



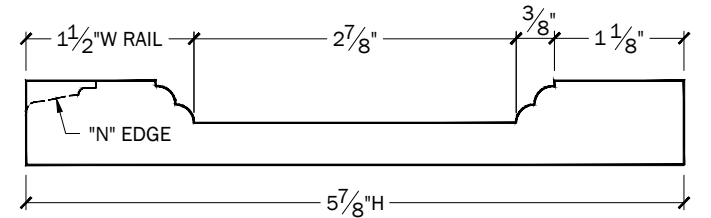
Intermediate Door Cross Rail



Lower Drawer Front Rail Profile



Top Drawer Front - 5 7/8"H



Door Construction

- 1 Piece MDF.

Back of Door Options

- Recessed MDF back finished in base paint.
- Recessed MDF back finished to match face exactly.
- White melamine flat back.

Cabinet Line

- Available with Full Access Frameless, Inset Frame, & Full Overlay Frame.

Rail/Stile Size Options

- Default Rail is 2 1/4"W. Rail widths possible 2 1/4"W - 4 1/2"W in 1/4" increments.
- Minimum Rail is 2 1/4"W with Concealed Hinges.
- Maximum Rail is 4 1/2"W, but this becomes a function of cabinet width.

Minimum Door Size

- 2 1/4"W Rails: 7 3/8"W x 8 13/16"H.
- Hinged Doors: As the width of the door decreases below the minimum, the stile width will decrease until it reaches the minimum of 2 1/4". Hinged doors smaller than 7 3/8"W will be manufactured as slab doors.
- Door cannot be hinged smaller than 8 13/16"H.
- Pull-Out/Non-Hinged Doors: As the width of the door decreases below the minimum, the stile width will decrease until it reaches the minimum of 1 1/2"W. Doors smaller than 5 7/8"W will be manufactured as slab doors.

Maximum Door Size

- 24"W x 48"H
- Wider/Taller doors will have intermediate cross rail & multiple panels. Cross rails can be removed, however this voids the warranty.

Radius Door Availability

- Not available.

3-Dimensional Mitered Doors

- Yes, but the back of the door will be flat & not recessed.

Wainscot/Appliance Panel Types

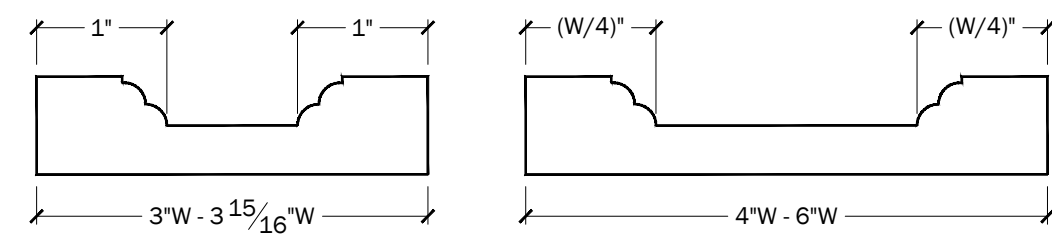
- Standard rails & panels. Dimensioned drawing showing the number of panels and location of cross rails is required. Maximum size: 96"W x 48"H or 48"W x 96"H.

Wainscot Arch & Arched Top Door Availability

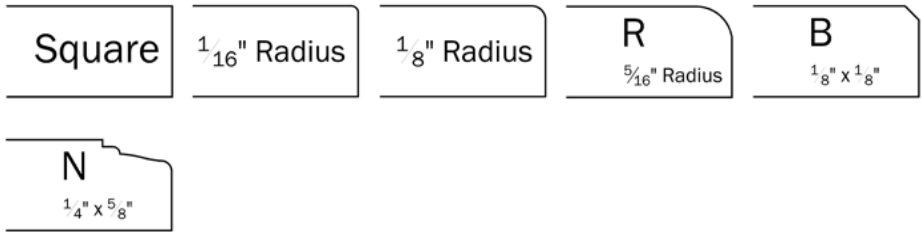
- Yes.

Recessed Filler/Pilaster/Post Availability

- Yes.
- Minimum width for Fillers & Pilasters: 3"W.
- Minimum width for Posts: 3"W.



Edge Profile Options

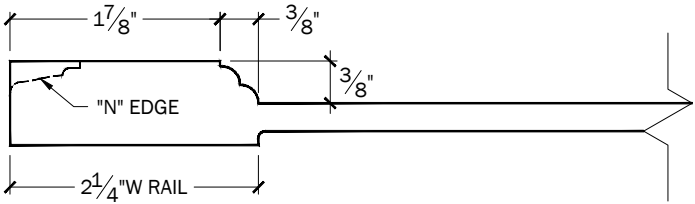


Drawer Front Options

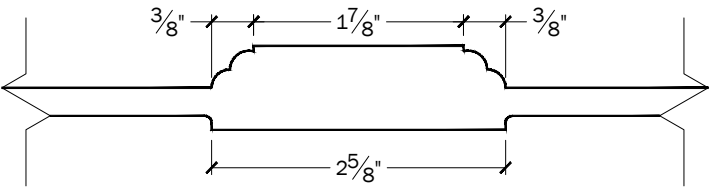


Shown: Ashbury - MDF - Portobello Fudge

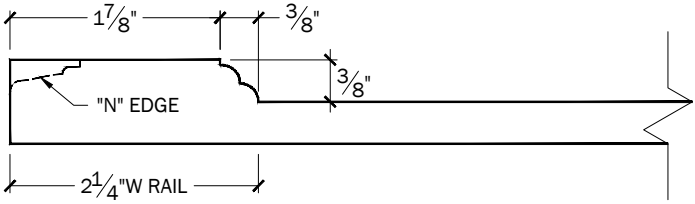
Prime Door Profile



Intermediate Door Cross Rail



Lower Drawer Front Rail Profile



Top Drawer Front - 5 7/8\"/>

Top Drawer Front Options

Recessed Door Match

- Vertical stiles will match door.
- See chart for top & bottom rail sizes as well as space for hardware, according to drawer front height.

Recessed Door Match with 1 1/2\"/>

- For Inset Frame cabinets only.

Slab Drawer Front

3/8\"/>

- For Inset Frame cabinets only.
- Applied moulding will be paint grade wood & will be susceptible to expansion & warpage.

1\"/>

Drawer Front Ordering Methodology

- As the drawer front height increases beyond the default top drawer height (which is different for each cabinet line), the drawer rails will increase in size until the full rail width is attained. The centre panel will remain the same until the rails have reached full width. At this point the centre panel will begin to increase along with the drawer height.
- The information below is based on the prime door rail width of 2 1/4\"/>

Classification	Drawer Height (DH)	Rail Widths	Space for Hardware
Full Access Frameless			
Top Drawer	Less than 5 3/4\"/>	Slab	DH - (2 x outside edge profile)
Top Drawer Recessed	5 3/4\"/>	1 1/2\"/>	DH - 3\"/>
Lower Drawer Recessed	6\"/>	(DH - 2 7/8\"/>	2 7/8\"/>
Lower Drawer Recessed	7 3/8\"/>	2 1/4\"/>	DH - 4 1/2\"/>
Inset Frame			
Top Drawer	Less than 5 7/16\"/>	Slab	DH - (2 x outside edge profile)
Top Drawer Recessed	5 7/16\"/>	1 1/2\"/>	2 7/16\"/>
Lower Drawer Recessed	5 9/16\"/>	(DH - 2 7/16\"/>	2 7/16\"/>
Lower Drawer Recessed	6 15/16\"/>	2 1/4\"/>	DH - 4 1/2\"/>
Full Overlay Frame			
Top Drawer	Less than 6 1/2\"/>	Slab	DH - (2 x outside edge profile)
Top Drawer Recessed	6 1/2\"/>	1 1/2\"/>	3 1/2\"/>
Lower Drawer Recessed	6 3/16\"/>	(DH - 3 1/2\"/>	3 1/2\"/>
Lower Drawer Recessed	8\"/>	2 1/4\"/>	DH - 4 1/2\"/>

Vertical Stile Size Options

- Frameless Drawer fronts: Minimum Stile width is 2\"/>
- Inset Frame Drawer fronts: Minimum Stile width is 1 1/2\"/>

Product specifications subject to change. All rights reserved. © 2017 Groupe Cabico Inc.

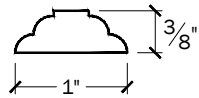
December 20, 2019 11:32 AM

Mullion Options



Shown: Ashbury - MDF - Portobello Fudge

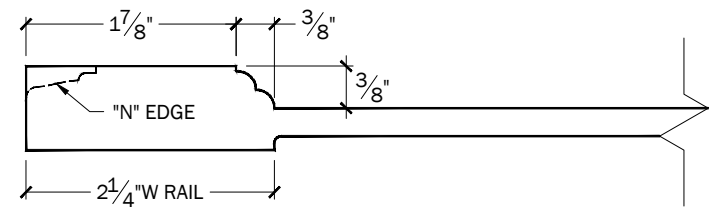
Mullion Profile



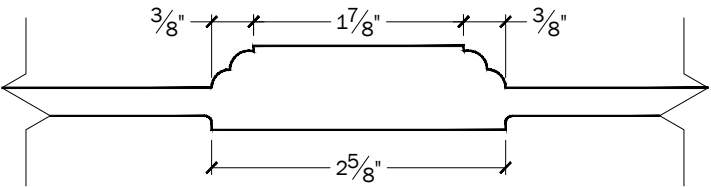
Mullion Options

- Most mullion styles have suggested ratios for width and height in order to maintain proper proportions for the design.
- Please refer to the mullion door specifications for these suggested sizes.

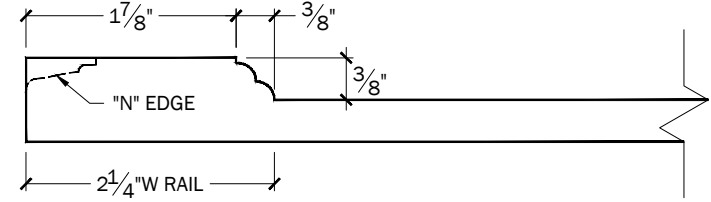
Prime Door Profile



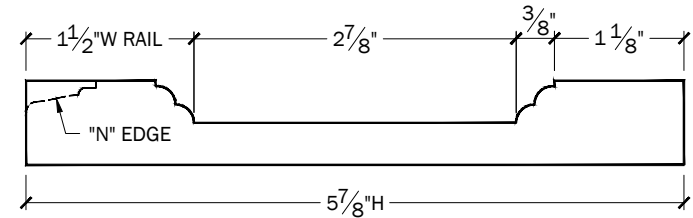
Intermediate Door Cross Rail



Lower Drawer Front Rail Profile



Top Drawer Front - 5 7/8 inch H

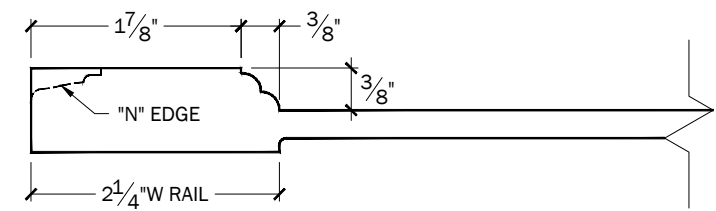


Species & Finishes

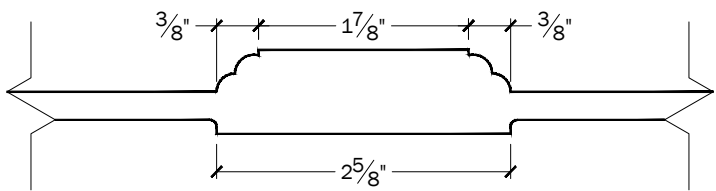


Shown: Ashbury - MDF - Portobello Fudge

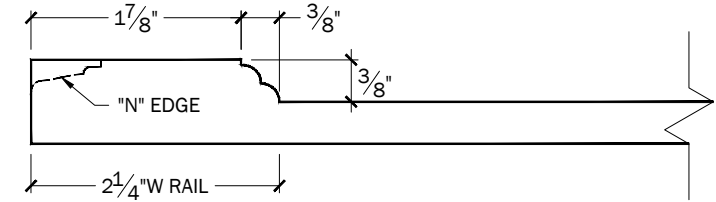
Prime Door Profile



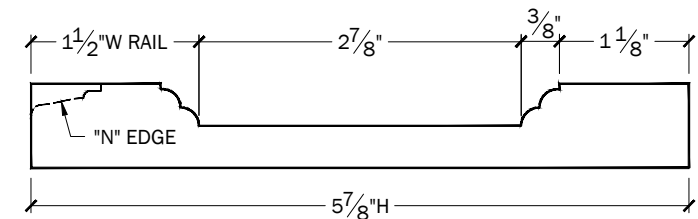
Intermediate Door Cross Rail



Lower Drawer Front Rail Profile



Top Drawer Front - 5 7/8"H



Finish Considerations

- The standard finish for the back of all doors is recessed backs. The standard finish for the back of all doors & drawer fronts is base paint without glaze.
- An additional charge will be applied to finish the backs of the doors & drawers exactly like the fronts.
- Cabico highly recommends using the “1/16 Radius edge” in place of “Square edge” when a painted finish is required, as this edge will minimize edge chipping.
- Glazed finishes appear different on different doors styles, different outside edge profiles, as well as on different wood species.

Species

Species

Avail.

Alder - Clear	N/A
Alder - Knotty (Solid Reverse Panel)	N/A
Aqua Gloss	N/A
Ash - Flat Cut White	N/A
Ash - Quarter Cut White	N/A
Aura Descent	N/A
Aura Gloss	N/A
Aura Matte	N/A
Bamboo Caramel	N/A
Bamboo Natural Light	N/A
Birch - Flat Cut Red	N/A
Cherry - Flat Cut	N/A
Cherry - Knotty (Solid Reverse Panel)	N/A
Cherry - Quarter Cut	N/A
Cypress - Flat Cut Select	N/A
Faux Stone Veneer	N/A
Fenix	N/A
Hickory - Flat Cut	N/A
High Pressure Laminate	N/A
Mahogany (Khaya)	N/A
Maple - Flat Cut	N/A
Maple - Quarter Cut	N/A
MDF - 1 Piece	•
• Species is available.	

Species

Avail.

Melamines	N/A
Oak - Flat Cut Red	N/A
Oak - Flat Cut White	N/A
Oak - Mill Sawn White	N/A
Oak - Quarter Cut Red	N/A
Oak - Quarter Cut White	N/A
Oak - Rift Cut Red	N/A
Oak - Rift Cut White	N/A
Oak - Textured Qtr Cut White	N/A
Oak - Textured Rift Cut White	N/A
Paint Grade	N/A
PETs	N/A
Pine - Flat Cut	N/A
Pine - Knotty (Solid Reverse Panel)	N/A
Sapele - Ribbon Cut	N/A
Stainless Steel	N/A
Tineo - Flat Cut	N/A
Teak - Flat Cut	N/A
Teak - Quarter Cut	N/A
Textured Faux Wood Veneer	N/A
Vision Collection	N/A
Walnut - Flat Cut	N/A
Walnut - Quarter Cut	N/A
• Species is available.	